



STOP COLLAR

Casing Centralizers, Float Shoe & Collars, Cementing Plug & Baskets



HINGED AND SLIP-ON STOP COLLARS

Accord with API 10D Recommendations

Stop collars are designed to grip the casing centralizers and cement baskets in its intended locations and provide the desired standoff. They are available in hinged stop collars and slip-on stop collars and they can be divided into different structures for various conditions and requirements. The stop collars are coated by powder baking or paint baking in high temperature to increase their corrosion and rust resistance performance. Stop collar sizes are ranging from 4-1/2" to 20".



Categories ▼

Hinged Bolted Stop Collars



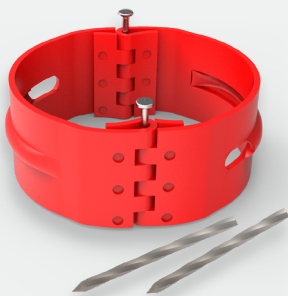
Hinged bolted stop collar is intended to lock on the casing without being slipped over the casing and offers quick and easy installation. It has higher holding forces than the centralizer starting force.

It utilizes a nut-bolt assembly to fix together and draws the stop collar into a friction grip around the perimeter of the casing.

Performance features

- › Can be locked on the casing pipe without having to be slipped on at the end of the casing pipe.
- › The locking mechanism is at 180° of the hinge.
- › Cross-bolt design makes it efficient and user-friendly.
- › Economical stop collars.
- › Suitable for subcritical annular tolerance.
- › Can be installed on any position on the casing.
- › Used to limit the axial movement of centralizers and cement baskets
- › Available in 4-1/2" to 20".

Hinged With Spiral Nail



Hinged spiral nail stop collar is used in both upset and non-upset casing to provide maximum clearance during rotation. It has a groove in the middle position, where the a spiral nail can be driven into for improved grip on the casing. The broader band firmly grips the collar in the casing pipe position.

Performance features

- › It is hinged at two places 180° apart.
- › It utilizes one spiral nail driven in each half to grips the collar to the casing pipe.
- › Hinged design avoids slipping on at the end of the casing for easy installation.
- › The most effective where low annular clearance is encountered.

 **MORE CHOICES.....**

More products can be purchased
Online at www.drinol.com



Hinged Type With Set Screws

Hinged type with set screws are a combination of hinged type stop collar and set screw stop collar. There has a row of set screws on the hinged collar, which has both easy installed structures and high holding forces performance.

Performance features

- › It is hinged at two places 180° apart and can be latched onto the casing pipe without being slipped on at the end of the casing pipe for easy installation.
- › A single row of set screws on the stop collar body to supply the gripping force to hold the collar to the casing.
- › Provide operational flexibility for numerous well applications.
- › Available in sizes ranging from 3-1/2" to 20".
- › Special sizes and combinations can be customized on request.



Single beveled

Slipped On With Set Screws

It is a high cost-utility ratio stop collars. There has a row of set screws on the single piece and seamless stop collar body to grip easily and firmly around the casing. The slipped on set screw type stop collars are tested to provide the highest holding force among all stop collar types.

Performance features

- › Single piece and seamless construction.
- › Available in single or double side beveled. The bevel provides a good lead-in edge for a rigid centralizer.
- › It is used when holding force requirements is very high.
- › Recommended for small hole operations and predominantly used on both sides of rigid or semi-rigid centralizers.
- › Available in 2-3/4" to 20".
- › Special sizes and combinations can be customized.



Double beveled

**Address:**

Room 1703, No. Building,
Haiyue Mansion,
HaigangDistrict, Qinhuangdao
city, Hebei Province, China.

Tel:

+86-17333531135

Web:

www.drinol.com

E-mail:

sales@drinol.com

CATALOG

Hebei Wennian Trading Co., Ltd